

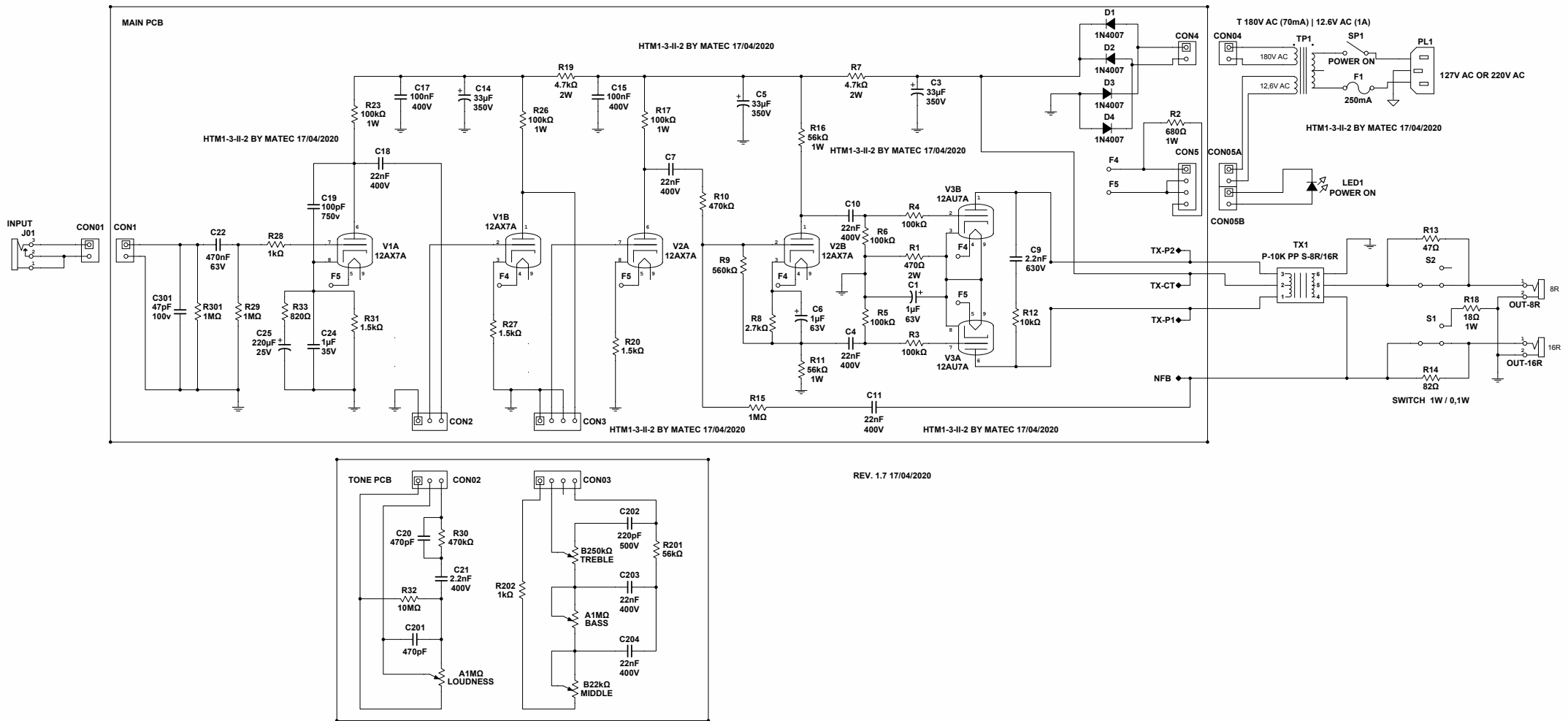
# Marshall

JTM-1 HANDMADES VERSION



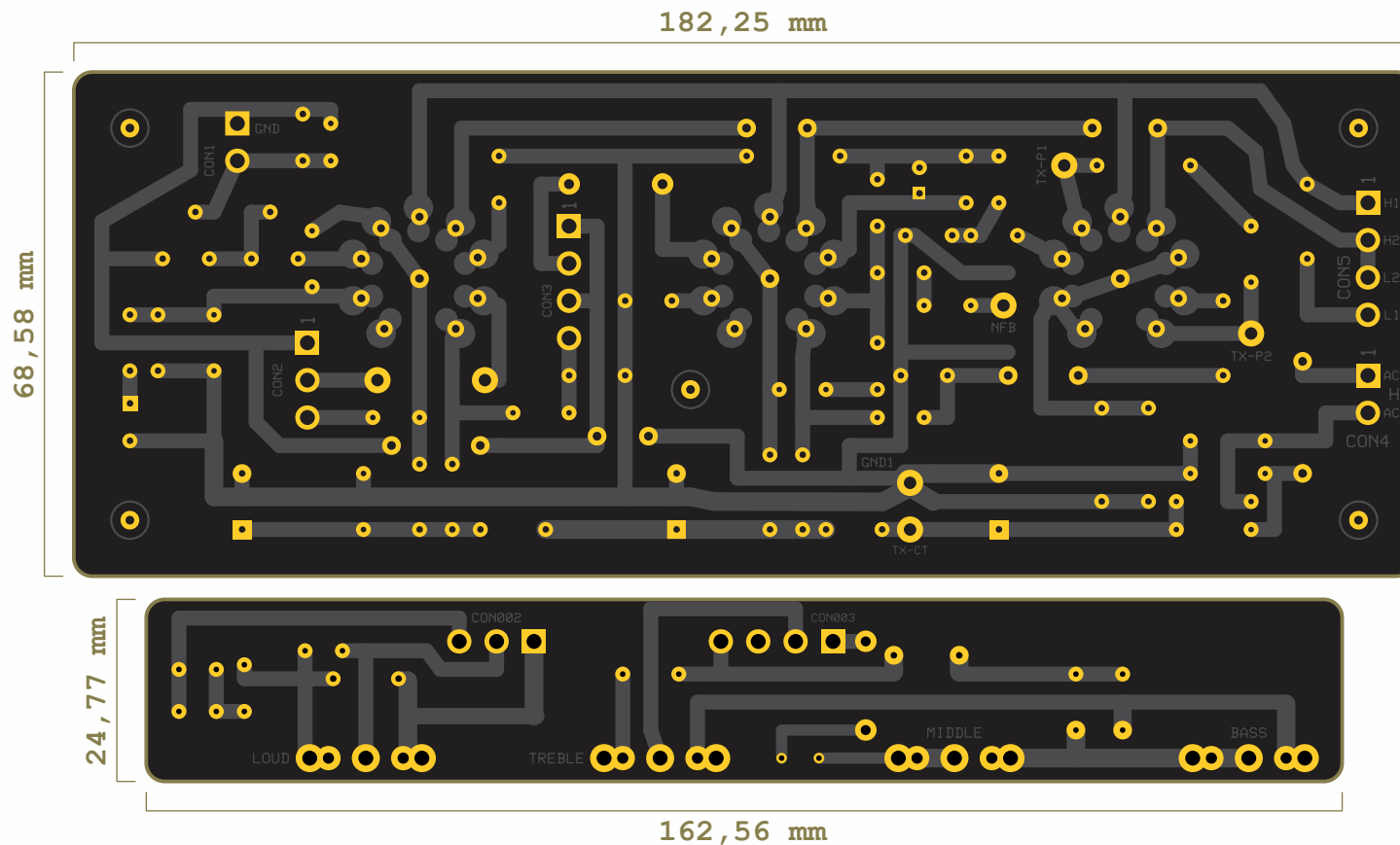
BY MATEC  
[HANDMADES.COM.BR/FORUM](http://HANDMADES.COM.BR/FORUM)

# DIAGRAM



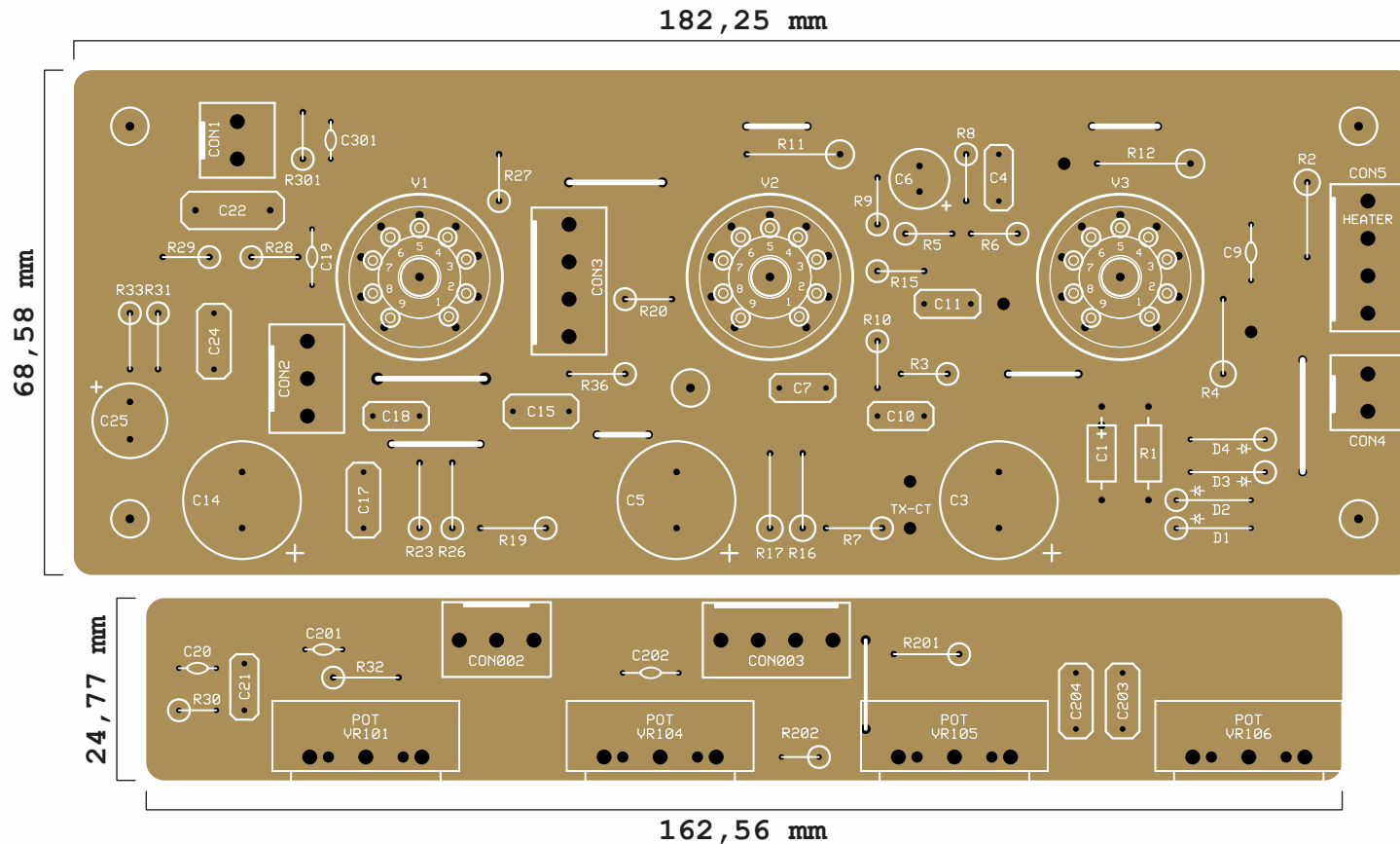
BY MATEC  
HANDMADES.COM.BR/FORUM

# PCB - BOTTOM LAYER



BY MATEC  
[HANDMADES.COM.BR/FORUM](http://HANDMADES.COM.BR/FORUM)

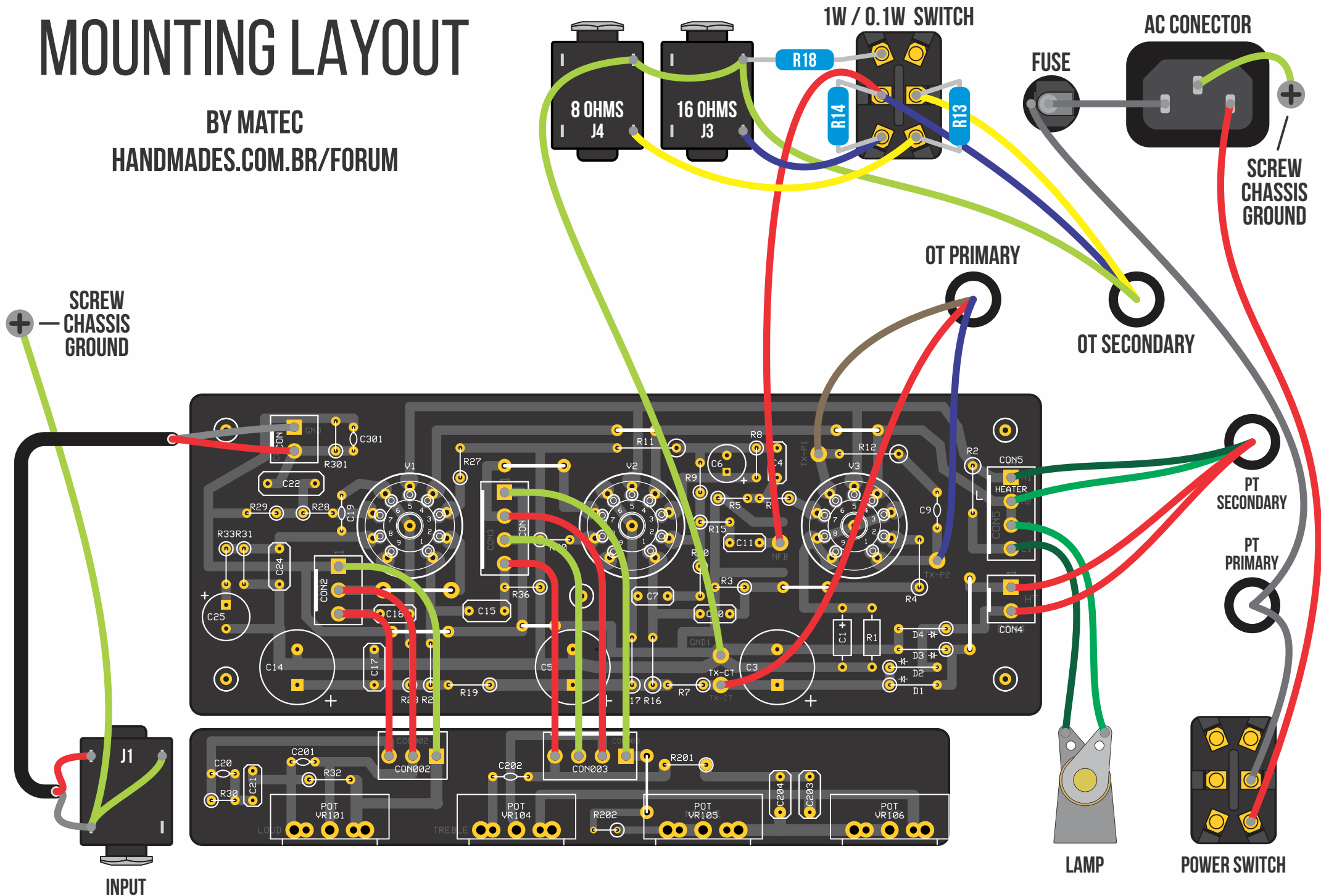
# PCB - TOP LAYER



BY MATEC  
HANDMADES.COM.BR/FORUM

# MOUNTING LAYOUT

BY MATEC  
HANDMADES.COM.BR/FORUM



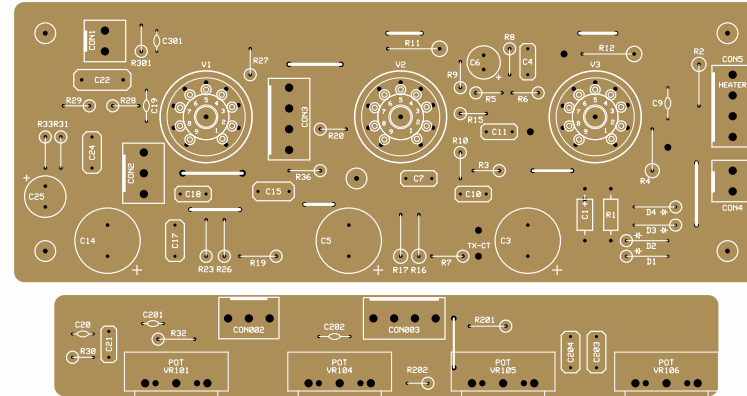
# LIST OF COMPONENTS

## RESISTORS

R1: 470R (2W)  
R2: 680R (1W)  
R3: 100K  
R4: 100K  
R5: 100K  
R6: 100K  
R7: 4.7K (2W)  
R8: 2.7K  
R9: 560K  
R10: 470K  
R11: 56K (1W)  
R12: 10K (1W)  
R13: 47R  
R14: 82R  
R15: 1M  
R16: 56K (1W)  
R17: 100K (1W)  
R18: 18R (2W)  
R19: 4.7K (2W)  
R20: 1.5K  
R23: 100K (1W)  
R26: 100K (1W)  
R27: 1.5K  
R28: 1K  
R29: 1M  
R30: 470K  
R31: 2.7K  
R32: 10M  
R33: 820R  
R36: 4.7M  
R201: 56K  
R202: 1K  
R301: 1M

## CAPACITORS

C1: 1uF (63V)  
C3: 33uF (350V)  
C4: 22nF (400V)  
C5: 33uF (350V)  
C6: 1uF (63V)  
C7: 22nF (400V)  
C9: 2.2nF (630V)  
C10: 22nF (400V)  
C11: 22nF (100V)  
C14: 33uF (350V)  
C15: 100nF (400V)  
C17: 100nF (400V)  
C18: 22nF (400V)  
C19: 100pF (1KV)  
C20: 470pF (100V)  
C21: 2.2nF (100v)  
C22: 470nF (63V)  
C24: 1uF (63V)  
C25: 220uF (35V)  
C201: 220pF (100v)  
C202: 220pF (100v)  
C203: 22nF (100v)  
C204: 22nF (100v)  
C301: 47pF (100v)



## DIODES

D1 D2 D3 D4: 1N4007  
Lamp: LED or Pilot Lamp 12v

## POTENTIOMETERS

VR101: A1M (LOUDNESS)  
VR104: B250K (TREBLE)  
VR105: B25K (MIDDLE)  
VR106: A1M (BASS)

## TUBES

V1: 12AX7 (With Socket 9 Pin to PCB)  
V2: 12AX7 (With Socket 9 Pin to PCB)  
V3: 12AU7 (With Socket 9 Pin to PCB)

## TRANSFORMERS

### POWER

Primary: 127v | 220v  
Secondary: 180v (70mA) | 12,6V (1A)

### OUTPUT

Push-pull Transformer  
Primary Impedance: 10K  
Secondary Impedance: 8R - 16R

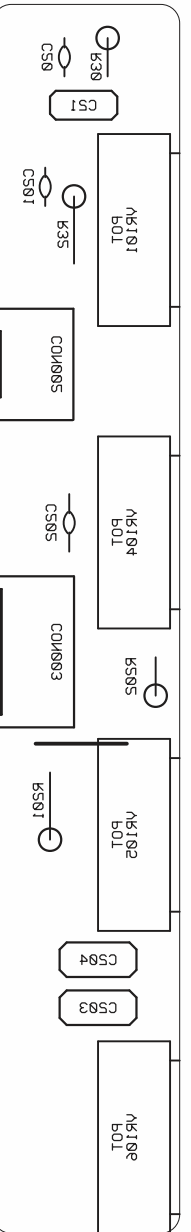
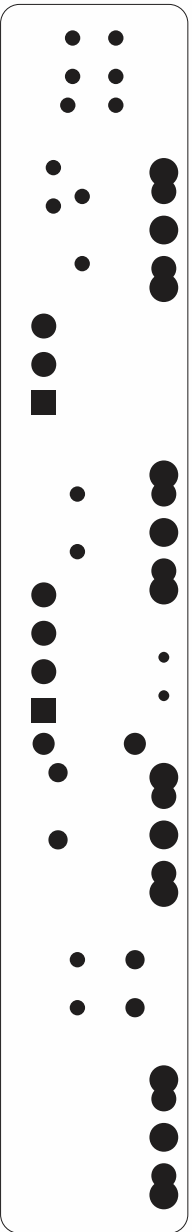
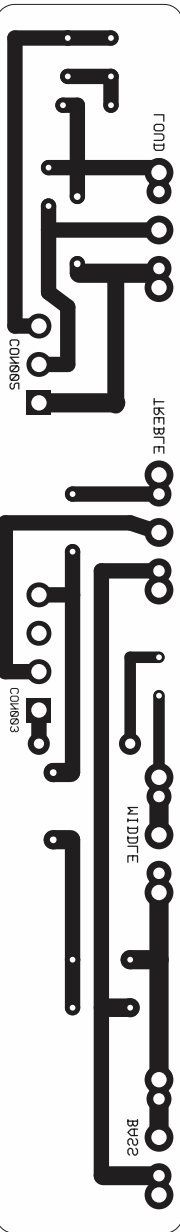
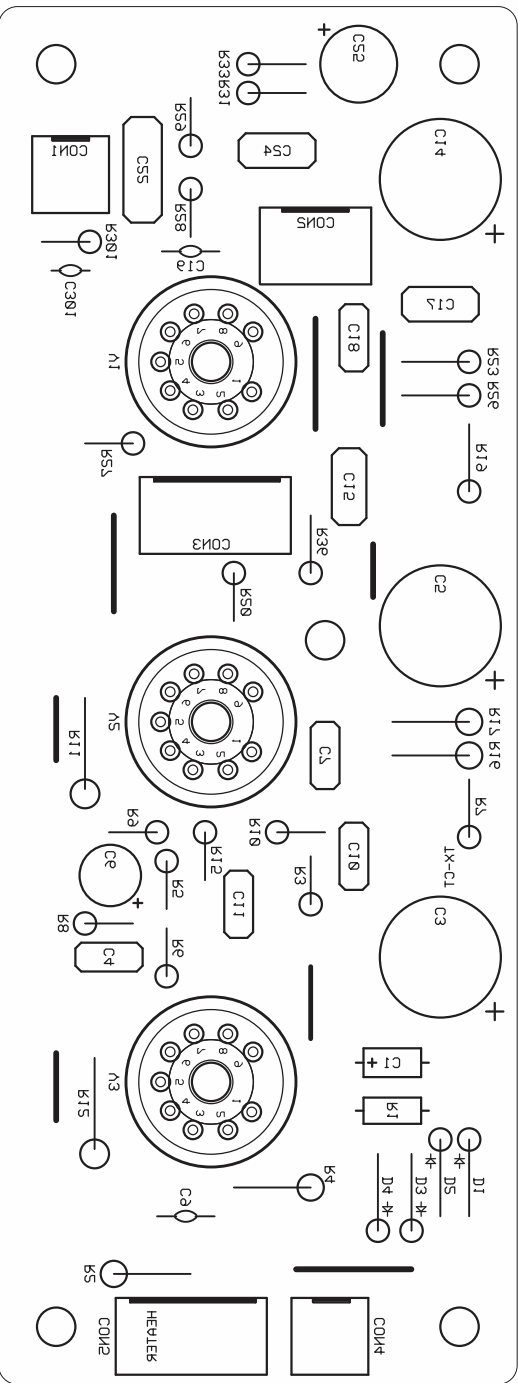
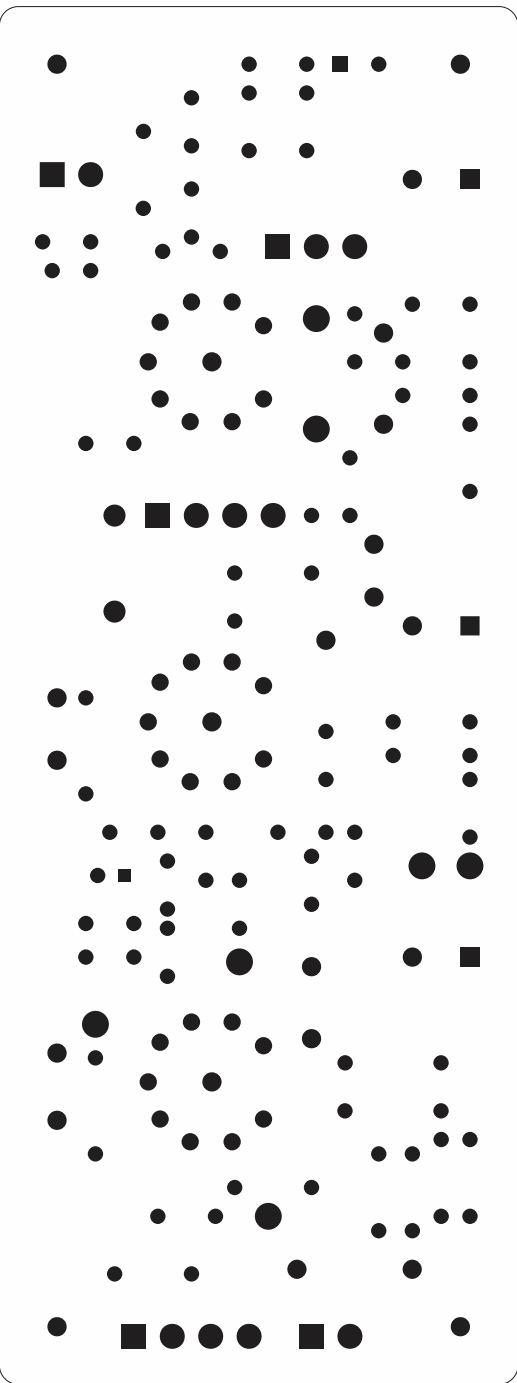
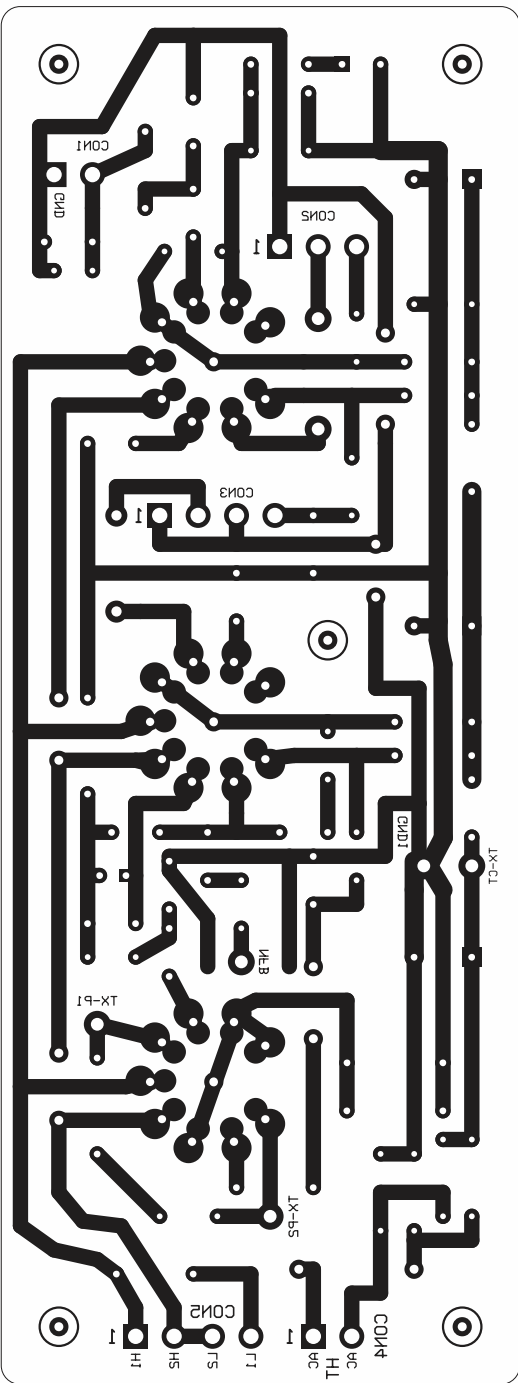
## FUSE

F1: 500mA (127v) or 250mA (220v)

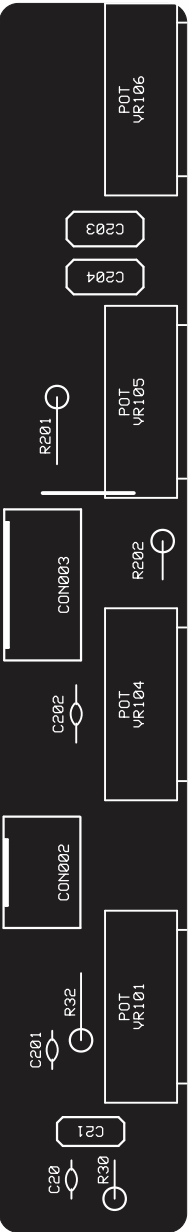
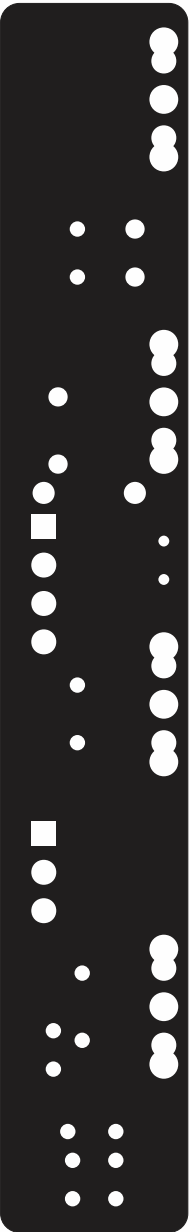
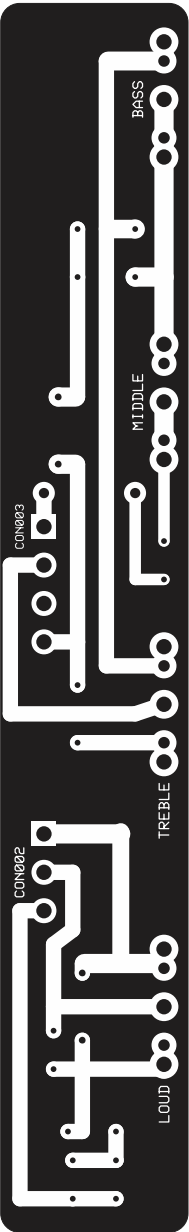
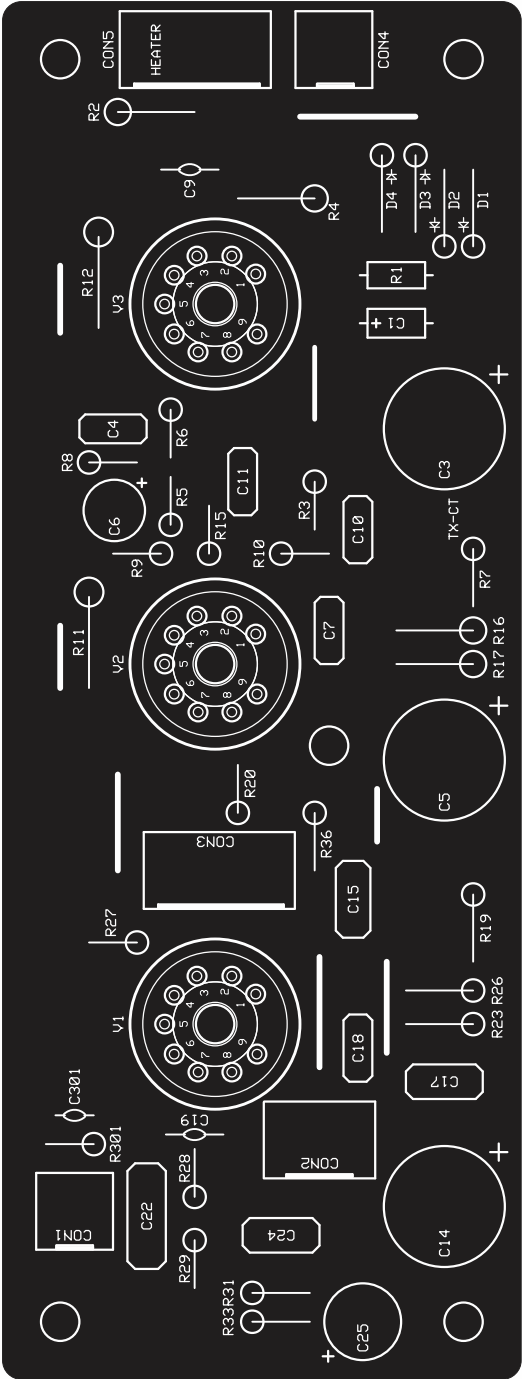
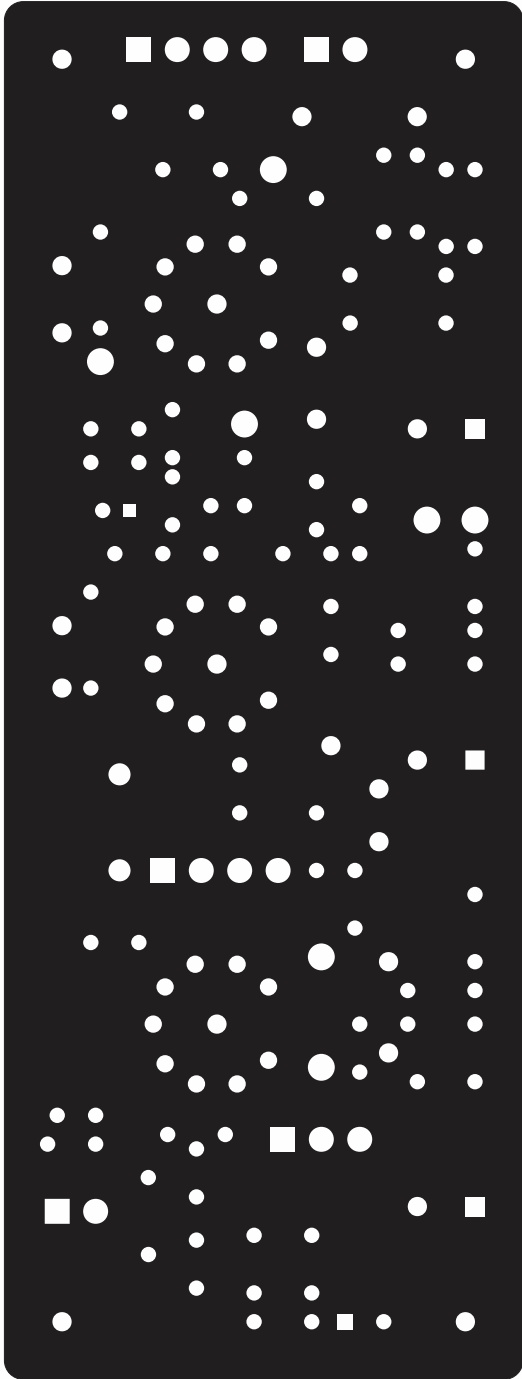
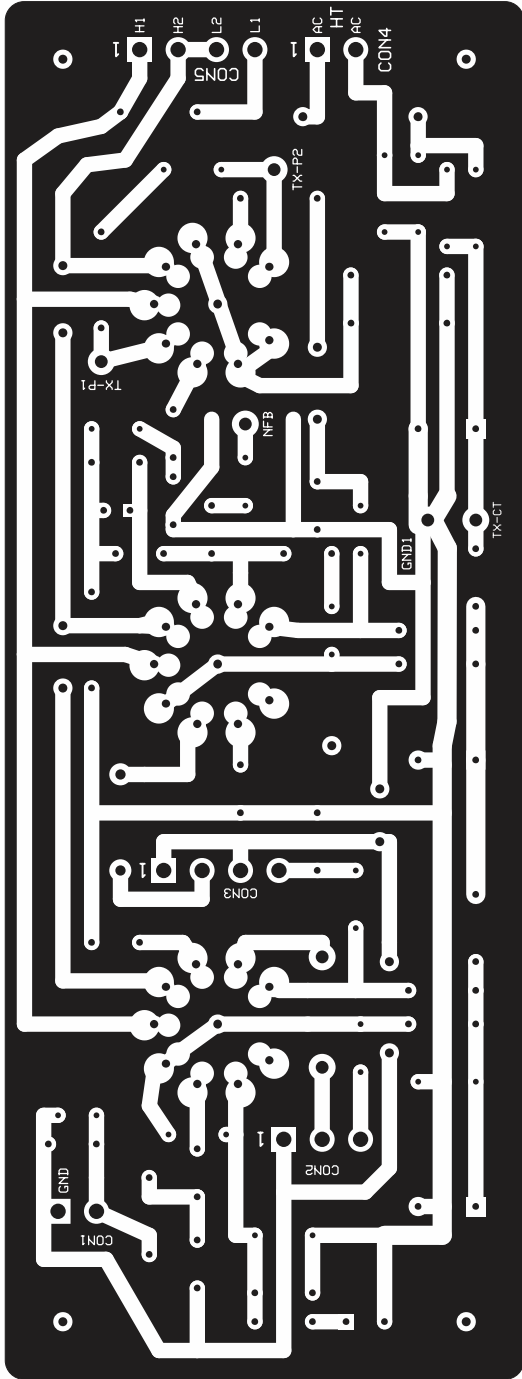
BY MATEC

HANDMADES.COM.BR/FORUM

# READY TO PRINT - TONER TRANSFER METHOD



# READY TO PRINT - PHOTORESIST METHOD





# Marshall

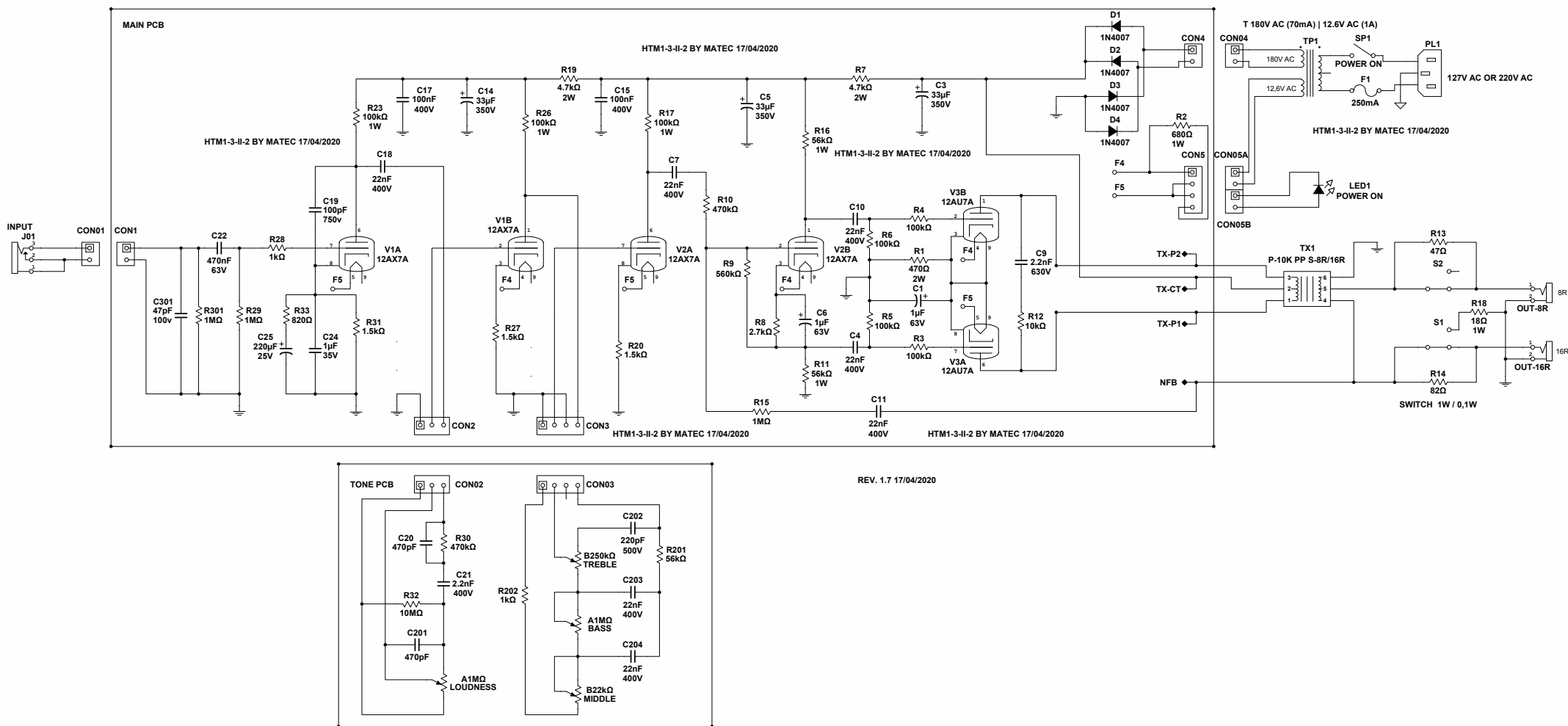
**HAND WIRED**

**JTM-1 HANDMADES VERSION**



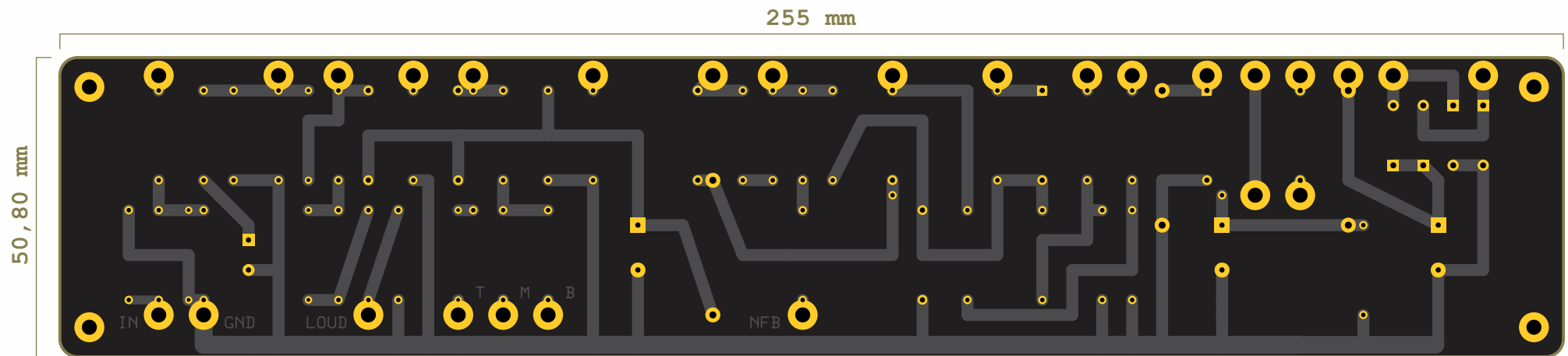
**BY MATEC**  
**HANDMADES.COM.BR/FORUM**

# DIAGRAM



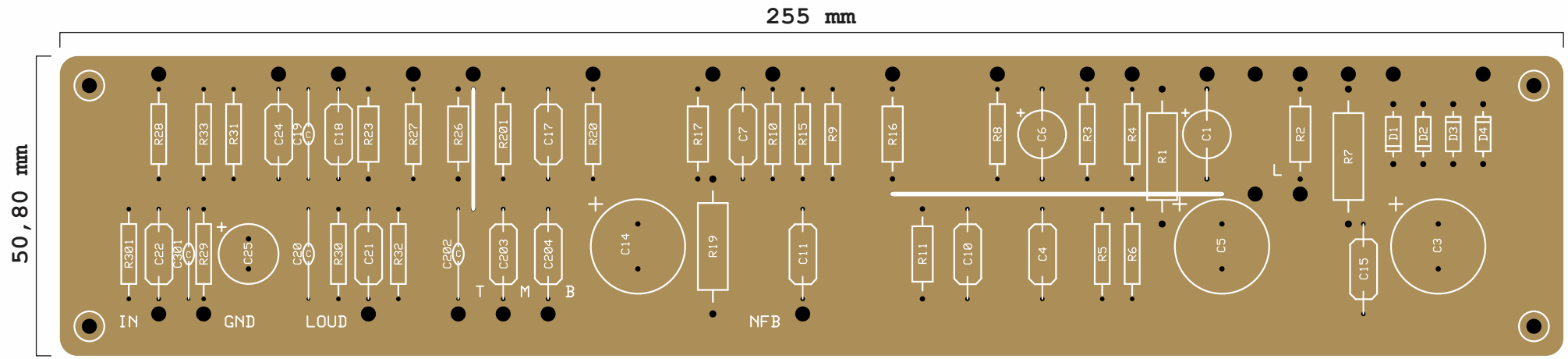
BY MATEC  
[HANDMADES.COM.BR/FORUM](http://HANDMADES.COM.BR/FORUM)

# PCB - BOTTOM LAYER



BY MATEC  
[HANDMADES.COM.BR/FORUM](http://HANDMADES.COM.BR/FORUM)

# PCB - TOP LAYER



BY MATEC  
[HANDMADES.COM.BR/FORUM](http://HANDMADES.COM.BR/FORUM)

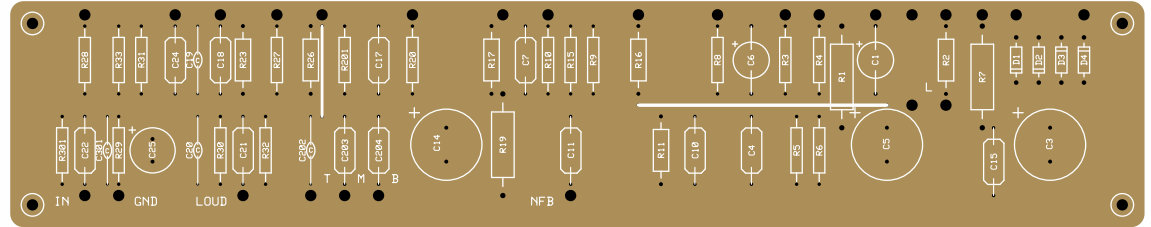
# LIST OF COMPONENTS

## RESISTORS

R1: 470R (2W)  
R2: 680R (1W)  
R3: 100K  
R4: 100K  
R5: 100K  
R6: 100K  
R7: 4.7K (2W)  
R8: 2.7K  
R9: 560K  
R10: 470K  
R11: 56K (1W)  
R12: 10K (1W)  
R13: 47R  
R14: 82R  
R15: 1M  
R16: 56K (1W)  
R17: 100K (1W)  
R18: 18R (2W)  
R19: 4.7K (2W)  
R20: 1.5K  
R23: 100K (1W)  
R26: 100K (1W)  
R27: 1.5K  
R28: 1K  
R29: 1M  
R30: 470K  
R31: 2.7K  
R32: 10M  
R33: 820R  
R36: 4.7M  
R201: 56K  
R202: 1K  
R301: 1M

## CAPACITORS

C1: 1uF (63V)  
C3: 33uF (350V)  
C4: 22nF (400V)  
C5: 33uF (350V)  
C6: 1uF (63V)  
C7: 22nF (400V)  
C9: 2.2nF (630V)  
C10: 22nF (400V)  
C11: 22nF (100V)  
C14: 33uF (350V)  
C15: 100nF (400V)  
C17: 100nF (400V)  
C18: 22nF (400V)  
C19: 100pF (1KV)  
C20: 470pF (100V)  
C21: 2.2nF (100v)  
C22: 470nF (63V)  
C24: 1uF (63V)  
C25: 220uF (35V)  
C201: 220pF (100v)  
C202: 220pF (100v)  
C203: 22nF (100v)  
C204: 22nF (100v)  
C301: 47pF (100v)



## DIODES

D1 D2 D3 D4: 1N4007  
Lamp: LED or Pilot Lamp 12v

## POTENTIOMETERS

VR101: A1M (LOUDNESS)  
VR104: B250K (TREBLE)  
VR105: B25K (MIDDLE)  
VR106: A1M (BASS)

## TUBES

V1: 12AX7 (With Socket 9 Pin to PCB)  
V2: 12AX7 (With Socket 9 Pin to PCB)  
V3: 12AU7 (With Socket 9 Pin to PCB)

## TRANSFORMERS

### POWER

Primary: 127v | 220v  
Secondary: 180v (70mA) | 12,6V (1A)

### OUTPUT

Push-pull Transformer  
Primary Impedance: 10K  
Secondary Impedance: 8R – 16R

## FUSE

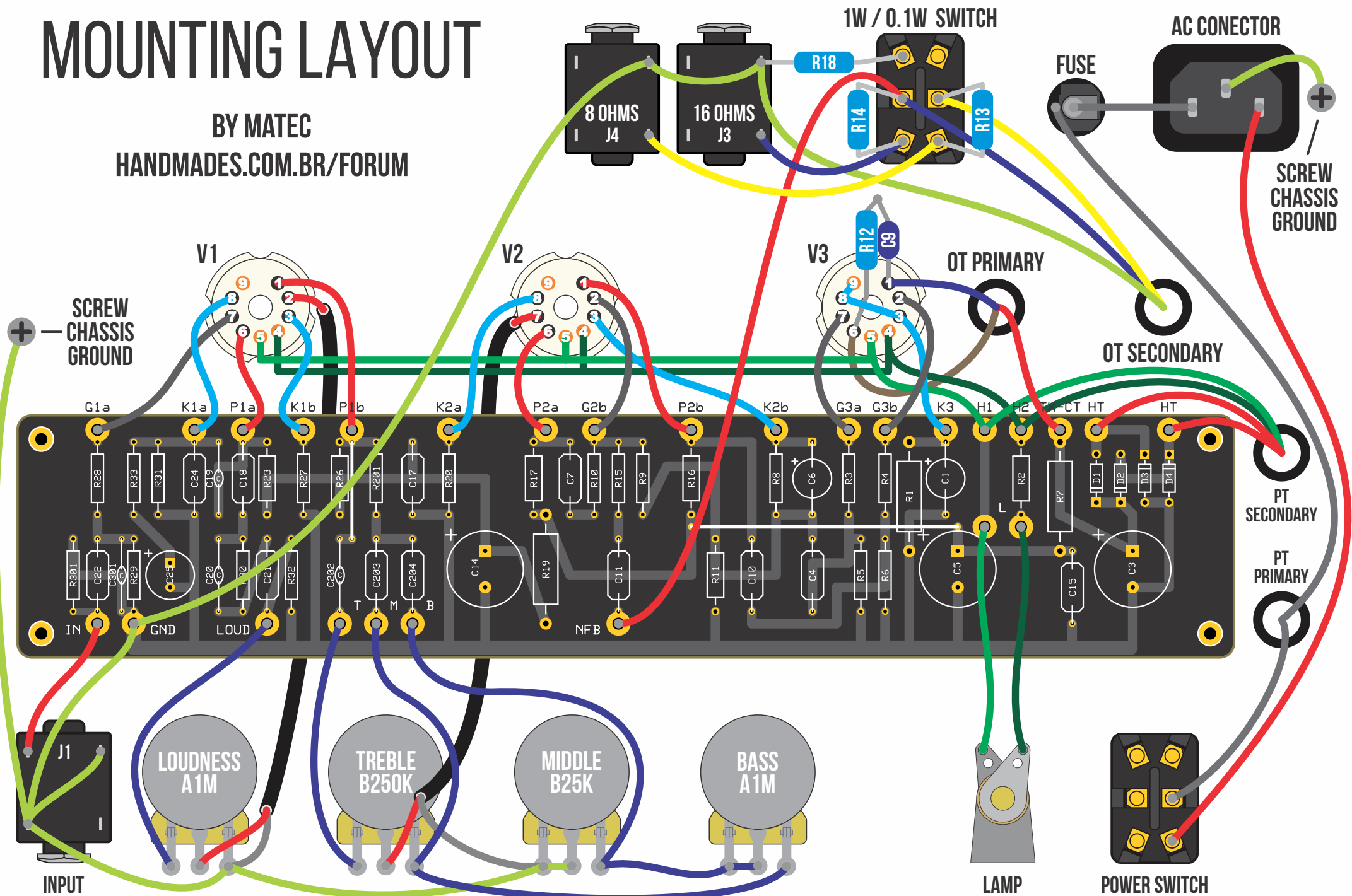
F1: 500mA (127v) or 250mA (220v)

BY MATEC

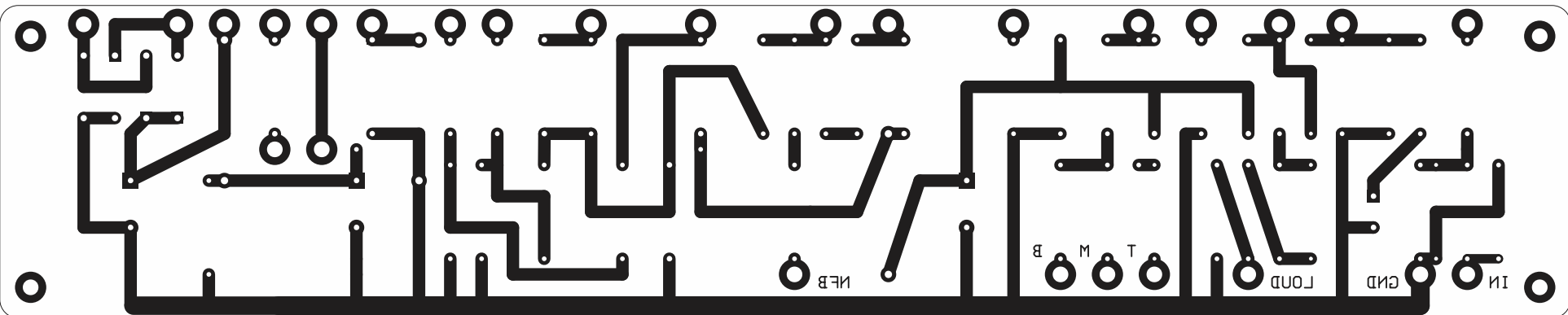
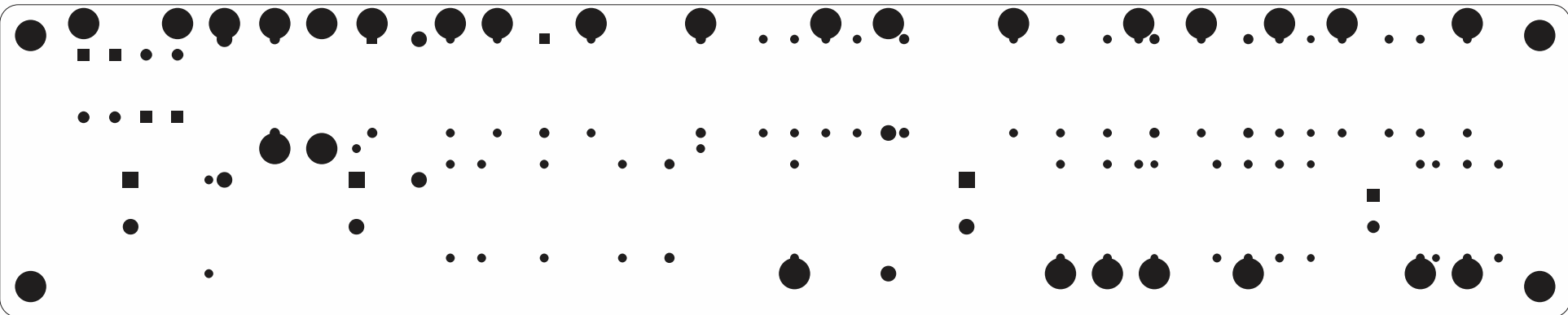
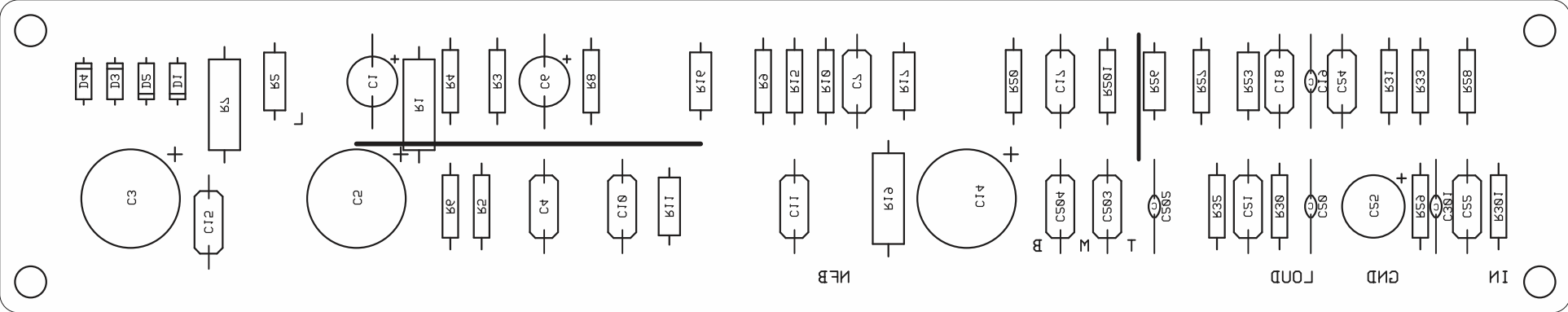
HANDMADES.COM.BR/FORUM

# MOUNTING LAYOUT

BY MATEC  
HANDMADES.COM.BR/FORUM



# READY TO PRINT - TONER TRANSFER METHOD



# READY TO PRINT - PHOTORESIST METHOD

